

YOUR GUIDE TO MYCITI

MyCiTi is Cape Town's safe, reliable, convenient bus system. Buses operate up to 18 hours a day. You need a **myconnect** card, but the system is easy to use once you know how.

1 GET YOUR CARD

MyCiTi uses a card-based payment system. Everyone needs their own **myconnect** card except children under the age of four.

Get your **myconnect** card for only R35 from MyCiTi station kiosks and participating retailers (see www.myciti.org.za for a list).

TIP: Your card is a bank card so you'll need to choose a PIN you can remember. Also remember to keep your card receipt safe in case something happens to it.

2 LOAD VALUE

Once you get your card you'll need to load value on it to pay for your fares. You can load any amount as Standard or save by loading a Mover package.

Occasional users and visitors can also enjoy unlimited travel on all routes including the Airport by loading a 1, 3 or 7-day package for only R75.

TIP: Most passengers save by loading Mover points and by travelling outside the weekday peak fare periods of 06:45 – 08:00 and 16:15 – 17:30.

3 PLAN YOUR JOURNEY

With MyCiTi you can easily transfer from one route to another to get to where you want to be.

Download the free, official MyCiTi app from app stores or visit www.myciti.org.za to easily plan your journey and access live updates to track your bus.

TIP: Use the journey planner to receive suggestions on the best routes and bus times to get you to where you need to be along with easy-to-follow directions.

4 TAP IN, TAP OUT

To use MyCiTi, you need to tap in and tap out to pay your fares and avoid penalties.

When you enter a station or board a bus at a stop, tap in by holding your card against the validator. When you leave a station or exit a bus at a stop, tap out by doing the same. If you don't tap in and tap out correctly, a penalty will be charged to your card.

TIP: If you transfer from one bus to another at a station you don't have to tap out, only tap out when you reach your destination.

5 TOP UP YOUR CARD

Ensure you always have value on your card by topping up at any station kiosk or participating retailer.

You can check your balance at kiosks and info terminals at stations, and on the validator whenever you tap in and tap out.

TIP: The validator will shine **green** if there's enough value, **yellow** if you're running low and **red** if there is insufficient value to travel.



Download the official app FREE and enjoy easy travel with MyCiTi

- Plan your journey using your GPS location.
- Access live updates to track your bus.
- Save routes and stops for instant access.
- Many other useful features.



MyCiTi ROUTES Valid from 29 November 2019 - 12 January 2020

- Trunk routes**
- T01 Dunoon – Table View – Civic Centre – Waterfront
 - T02 Atlantis – Table View – Civic Centre
 - T03 Atlantis – Melkbosstrand – Table View – Century City
 - T04 Dunoon – Omuramba – Century City
 - A01 Airport – Civic Centre
- Direct routes**
- D01 Khayelitsha East – Civic Centre
 - D02 Khayelitsha West – Civic Centre
 - D03 Mitchells Plain East – Civic Centre
 - D04 Kapteinsklop – Mitchells Plain Town Centre – Civic Centre
 - D05 Dunoon – Parklands – Table View – Civic Centre – Waterfront
 - D08 Dunoon – Montague Gardens – Century City
- Area routes**
- A01 Vredehoek – Gardens – Civic Centre (clockwise)
 - A02 Salt River Rail – Walmer Estate – Civic Centre
 - A03 Oranjezicht – Gardens – Civic Centre
 - A04 Oranjezicht – Gardens – Adderley – Waterfront – Sea Point
 - A05 Sea Point – Fresnaye – Civic Centre
 - A06 Camps Bay (clockwise) – Civic Centre
 - A07 Camps Bay (anti-clockwise) – Civic Centre
 - A08 Hangberg – Hout Bay Harbour – Sea Point – Adderley
 - A09 Hout Bay Beach – Imizamo Yethu – Sea Point – Adderley
 - A10 Table Mountain
 - A11 Vredehoek – Gardens – Civic Centre (anti-clockwise)
 - A12 Upper District Six – Civic Centre
 - A13 Upper Kloof Street – Adderley – Waterfront
 - A14 Sea Point – Civic Centre
 - A15 Sea Point – Grand Parade
 - A16 Waterfront Silo – Civic Centre
 - A18 Hangberg – Imizamo Yethu – Sea Point – Adderley
 - A19 Sunningdale – Parklands – Table View – Sunningdale (clockwise)
 - A21 Parklands – Table View – Melkbosstrand – Duynfontein
 - A24 Sunningdale – Gie Road – Wood
 - A25 Sunningdale – Wood Drive – Wood
 - A23 Sunningdale – West Beach – Table View – Sunningdale (anti-clockwise)
 - A21 Atlantis Industria East – Atlantis
 - A22 Atlantis Industria West – Protea Park – Avondale – Atlantis
 - A23 Saxonsea – Atlantis
 - A24 Mamre (Crown) – Atlantis
 - A25 Pella – Atlantis
 - A26 Sherwood – Atlantis
 - A27 Robinvale – Atlantis
 - A28 Avondale – Protea Park – Atlantis Industria West – Atlantis
 - A29 Saxonsea – Goede Hoop – Atlantis
 - A30 Mamre (Frans) – Atlantis
 - A31 Silverstreamstrand – Atlantis
 - A32 Summer Greens – Woodbridge Island
 - A33 Century City Rail – Omuramba – Salt River – Adderley
 - A34 Summer Greens – Century City – Woodbridge Island

Station
 Rail station

Stop
 Stop only accessible in direction indicated

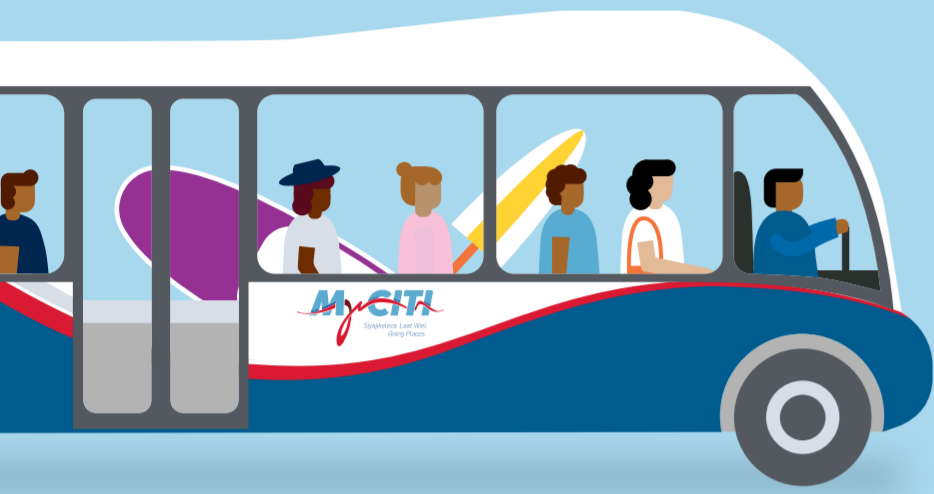
Routes, stops and stop names are subject to change.

* At the time of going to print, MyCiTi services to Khayelitsha and Mitchells Plain were temporarily suspended.

14.11.19

THIS MAP IS NOT TO SCALE

THINGS TO DO WITH MYCITI



NATURE

20 Clifton beaches
While away a sunshine day and plunge into the bracing water at Clifton's famous beaches. Perfect for picnics but remember no alcohol is allowed on the beach.
Route: **108** or **109**
Closest stop: Clifton – Clifton 4th

21 Camps Bay
Camps Bay is perfect for a day at the beach. It offers white sandy beaches, a tidal pool, mountain views, plenty of restaurants and trendy bars for sundowners.
Route: **106**, **107**, **108** or **109**
Closest stop: Camps Bay or Whale Rock

26 Deer Park
Take some time away from the hustle and bustle of city life by visiting Deer Park. Situated in Vredehoek on the slopes of the mountain, the nature reserve offers the perfect setting for a relaxing stroll, picnic or cycle ride. There's also a children's play park, great views and coffee shops.
Route: **101** or **111**
Closest stop: Herzlia

34 Intaka Island
Intaka, meaning 'birds' in Xhosa, is a bird sanctuary and wetland right in the heart of Century City. It is home to 120 bird species, 213 plant species and an educational eco-centre. Take your kids along or simply get away from the busy city life and enjoy a leisurely stroll.
Route: **262**
Closest stop: Central Park

36 Rietvlei Wetlands
Situated close to Table View and Milnerton, the Rietvlei Wetlands is a great place to experience nature with walking trails, birdwatching, braai spots, and picnic areas. There is also a lake that is used for windsurfing and sailing.
Route: **T01**
Closest stop: Grey station

38 Bloubergstrand
This beach, with its postcard scenery, is ideal for fun water sports while Marine Drive along the beachfront is also a great place to walk and immerse yourself in the beauty. There are world-class kitesurfing competitions and the option to try this adrenaline sport with the help of a kitesurfing school on the beachfront.
Route: **214**
Closest stop: Marine to Seal

SHOPPING & MARKETS

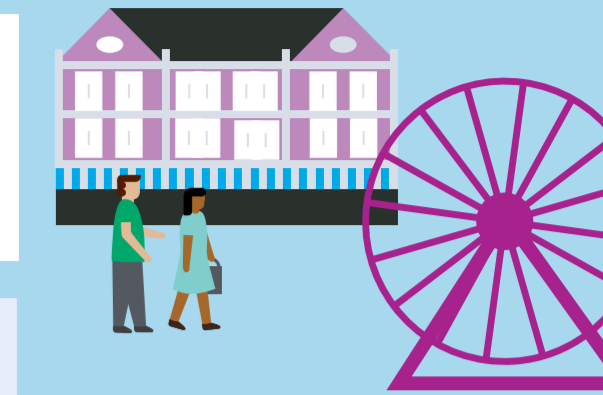
11 Greenmarket Square
Surrounded by street cafés and restaurants, this outdoor market is a must for any visitor. While there you can also visit the Pan African Market on Long Street for décor items and souvenirs with an authentic African flavour, including wooden figurines, beaded items, and colourful artworks. You can also immerse yourself in the nearby Church Street art galleries and stalls.
Route: **111**
Closest stop: Longmarket

17 The V&A Waterfront
The V&A Waterfront has so much to offer from shops, restaurants and children's play areas to live entertainment, cinemas, hotels and spas. The Nelson Mandela Gateway at the Clock Tower is the gateway to Robben Island where former President Nelson Mandela and others were imprisoned. There are a variety of boat trips and harbour cruises on offer.
Route: **T01**, **104** or **113**
Closest stop: Nobel Square or Waterfront station

23 Bay Harbour Market
This popular market situated in the Hout Bay harbour is near the beach and offers food, gifts and live music.
Route: **108**
Closest stop: Atlantic Skipper

27 The Woodstock Foundry
This is a working industrial art foundry where you will find a licensed restaurant, a coffee roaster and café, a botanical florist, high-end designer furniture, arty décor for home and office and fabrics.
Route: **261**
Closest stop: Lower Church

29 Oranjezicht City Farm Market
With stunning backdrops of the Waterfront and Atlantic Ocean, this popular weekend food market at Granger Bay is known for fresh, local produce and artisanal culture, and is now also opened on Wednesday evenings.
Route: **104**
Closest stop: Somerset Hospital



31 Milnerton Flea Market
Although it was originally located in Milnerton, this quirky flea market is now in Marine Drive, Paarden Eiland. If you're after a bargain there are lots on offer and the market is child- and animal-friendly.
Route: **T01**
Closest stop: Zoarvlei station

33 Canal Walk Shopping Centre
Canal Walk is a shopper's dream with more than 400 shops to choose from. It also has a wide variety of restaurants, a games area for kids and a movie theatre for a fun day out with the family.
Route: **261** or **D08**
Closest stop: Canal Walk North or South

CULTURE & HERITAGE

2 Labia Theatre
This independent movie theatre is situated in Orange Street, Gardens. When it opened in 1949, it hosted performing arts and later added screens to become a cinema. One of the advantages of the Labia is that you can enjoy a meal and drinks while watching your movie.
Route: **101** or **111**
Closest stop: Government Avenue

4 Iziko South African Museum
Over the last 200 years, scientists at the South African Museum have been adding to the collection of almost two million items. At a very affordable price, you can view specimens ranging from over 700 million years old to as recent as a few days old.
Route: **101** or **111**
Closest stop: Michaelis

6 District Six Museum
District Six was a densely populated suburb near the city centre. Due to the infamous apartheid-era Group Areas Act, the site was identified for forced removals. The museum tells the story of that time and houses memorabilia and artefacts from former residents.
Route: **101**, **103**, **104** or **111**
Closest stop: Lower Buitenkant

10 St George's Cathedral
When visiting the Anglican cathedral, you will get to see the Crypt with its exhibition recalling the peace marches that preceded the release of former President Nelson Mandela. Also, a piece of the historic Berlin Wall can be viewed across the way in St George's Mall.
Route: **106**, **107** or **113**
Closest stop: Groote Kerk

7 City Hall and the Nelson Mandela Statue
After being freed from his 27-year incarceration, Nelson Mandela made his first public speech on 11 February 1990 from the City Hall balcony. To commemorate this pivotal moment in South Africa's journey to democracy, a statue of this great leader was erected on the very same balcony.
Route: **102** or **112**
Closest stop: Darling

8 The Castle of Good Hope
Built in 1659, the Castle of Good Hope is South Africa's oldest colonial building. When built it was on the edge of the city's shoreline. Today it houses a military museum, William Fehr's collection of paintings and the Cape Town Highlanders Regiment.
Route: **102**, **112** or **261**
Closest stop: The Castle or Castle

9 Church Square, Iziko Slave Lodge and The Slave Tree
In the 1700s Cape Town was home to many slaves. The Iziko Slave Lodge, which used to house slaves, has an exhibition called "human wrongs to human rights". On historic Church Square nearby there's a memorial to slavery and a plaque marking the site of the tree under which slaves were auctioned.
Route: **106**, **107** or **113**
Closest stop: Groote Kerk

12 Long Street
Long Street is the heartbeat of Cape Town's nightlife. It offers a variety of restaurants ranging from Kurdish, Chinese, Mozambican and Indian, with many clubs and bars to choose from. If you can't find anything you like, there are also some great eateries nearby in Loop and Bree streets.
Route: **111**
Closest stop: Mid Long or Upper Long

13 Bo-Kaap
Explore this historic district, with its colourful homes, cobbled streets, spice shops, and mosques.
Route: **101**
Closest stop: Church

14 Artscape Theatre Centre
If the performing arts are more to your liking then Artscape is just for you. Undoubtedly the main performing arts centre in Cape Town, it is the home of ballet, opera and plays of every genre. Visit www.artscape.co.za to find out what's on.
Route: **T01**
Closest stop: Civic Centre station

15 V&A Waterfront Silo District
The V&A Waterfront's Silo District, completed in 2017, has become the new art and cultural hub of Cape Town. The iconic Zeitz Museum of Contemporary Art Africa, which houses more than 100 galleries, and the many other shopping and culinary attractions make the Silo District a must see for any visitor.
Route: **104** or **116**
Closest stop: Waterfront Silo

FAMILY FUN

3 Planetarium
Get a truly world-class experience at the Planetarium. Its new multi-sensory digital dome will give you a greater appreciation of the beauty of the night skies and a whole lot more.
Route: **101** or **111**
Closest stop: Michaelis

5 The Company's Garden
Situated adjacent to Parliament, the Company's Garden was established by the Dutch East India Company in 1652. Here you will discover a fine selection of trees, lawns, a popular restaurant, a rose garden, and heritage vegetable gardens. It also houses the South African National Art Gallery, Iziko South African Museum and the Planetarium. The garden also offers free Wi-Fi.
Route: **106**, **107** or **113**
Closest stop: Groote Kerk

16 Two Oceans Aquarium
Featuring some of the finest aquatic exhibits Cape Town has to offer, the Two Oceans Aquarium will enthrall you and the whole family with more than 3 000 living sea animals. It also hosts regular sleepovers for children and raises awareness of environmental issues.
Route: **104**
Closest stop: Aquarium

18 Mouille Point and Green Point Park
In this area, situated between the V&A Waterfront and Sea Point, there's a beachfront zone of family-friendly activities and one of the city's best-loved parks.
Route: **T01** or **104**
Closest stop: Stadium or Lighthouse

19 Sea Point Promenade
Enjoy the picturesque scenery while strolling along the Atlantic Ocean seafront. You can also grab an ice-cream or a bite to eat near the Pavilion or take a dip in the famous public pool.
Route: **104**
Closest stop: Three Anchor Bay to Queens Beach

30 Trampoline Park
Looking for a perfect way to release some pent-up energy? Then look no further than Jump Around indoor trampoline park. You can also choose to play soccer, dodgeball or basketball.
Route: **T01**
Closest stop: Zoarvlei station

32 Lagoon Beach
The beach and sheltered lagoon area are perfect for family fun. There are also restaurants nearby when hunger strikes.
Route: **T01**
Closest stop: Lagoon Beach station

35 Killarney Race Track
Head over to the city's premier motor-racing track for an adrenaline rush.
Route: **T01** or **T04**
Closest stop: Killarney station

37 Milnerton Water Park
The perfect family venue with braai facilities, a swimming pool, water slides, mini-golf, and chess.
Route: **T01**
Closest stop: Table View station

OUTDOOR ACTIVITIES

1 Gardens Skate Park
This award-winning skate park is under a bridge in Mill Street next to the MyCiti Gardens station.
Route: **101**, **103**, **104** or **111**
Closest stop: Gardens station

24 Lion's Head
Situated 750m above sea level, Lion's Head and Signal Hill are ideal for day-time activities like hiking, paragliding, hang-gliding or microlighting. The walk up the head itself requires a moderate level of fitness and the unpredictable weather means you always need a light jacket and water. These sites provide breathtaking views of Table Mountain, the city and the Atlantic coastline.
Route: **106** or **107**
Closest stop: Kloof Nek

25 Table Mountain Aerial Cableway
Visit the icon of Cape Town, the majestic Table Mountain. Take the cableway to the summit, or walk or cycle instead. If you're feeling adventurous, hike up Skeleton Gorge to take advantage of vistas of the city and sea.
Route: **110**
Closest stop: Upper Tafelberg

39 Big Bay
A must for surfers, this sheltered bay is a perfect place to spend a day on the beach with family and friends – surfing, swimming and soaking up the sun.
Route: **214**
Closest stop: Big Bay

40 Melkbosstrand
This coastal village has lots to offer visitors including kayaking, swimming, kitesurfing, fishing, and windsurfing – with spectacular views, seaside restaurants, and even a paintball field.
Route: **214** or **T03**
Closest stop: Melkbosstrand station



TURN OVER TO FIND THESE ACTIVITIES ON THE MAP